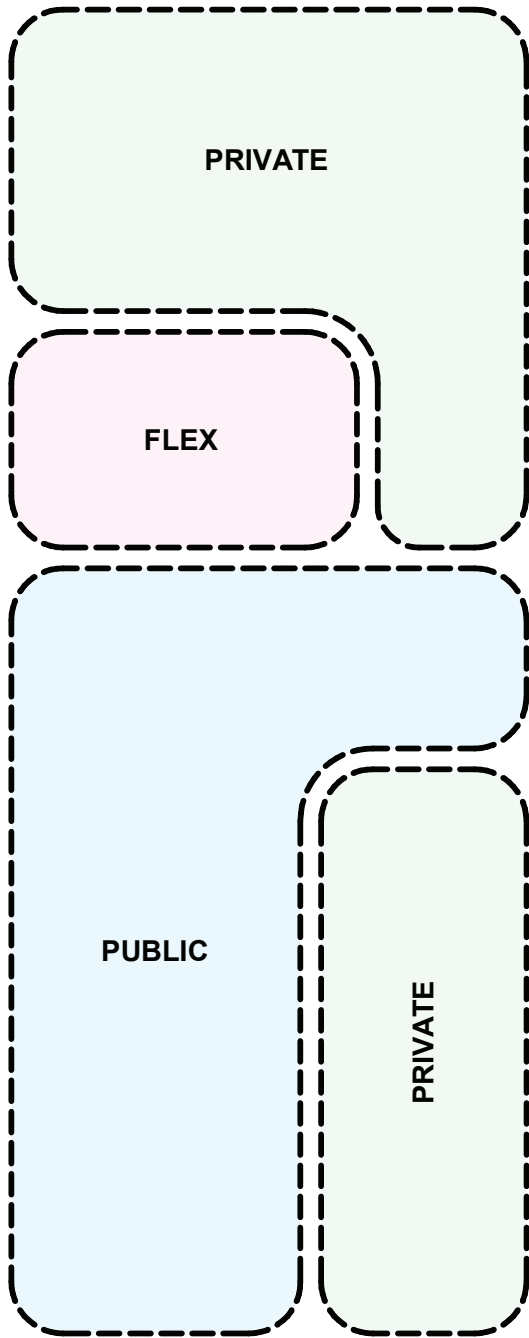
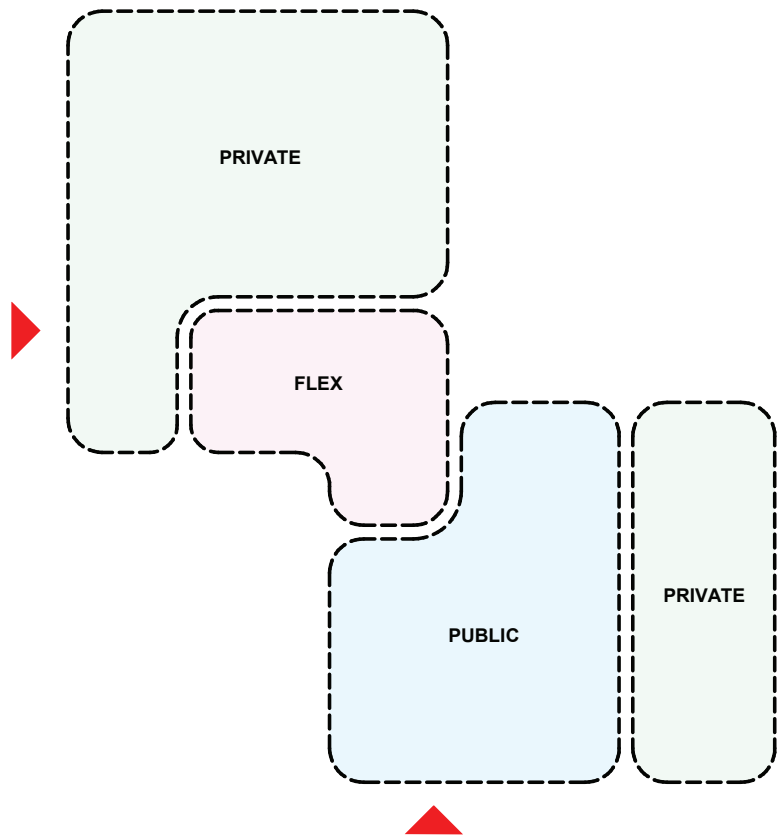


**Unit 1:**

This unit can terminate the end of a typical 65' wide, double-loaded corridor residential building. The width of unit allows the separation of private spaces and accommodates a flexible space with bedrooms grouped around it. The kitchen is centrally situated to interact with public and the flexible areas.



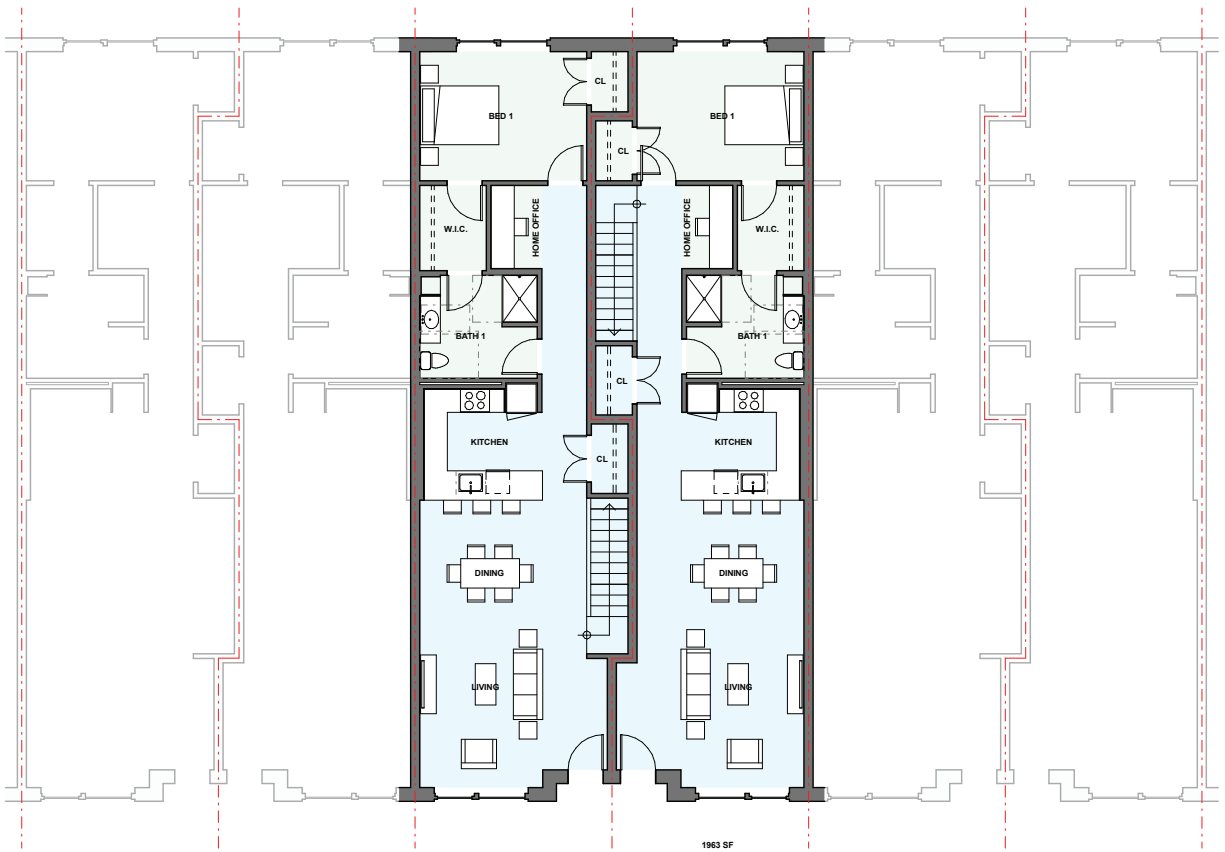
1580 SF



**Unit 2:**

This unit is situated on an inside corner of a building. Private areas are placed at the extremities of the unit with public and the flexible areas centrally located. The kitchen is situated to interact with public and the flexible areas.





1963 SF

Unit 3: "Townhouse" Unit

**Unit 3:**

This “townhouse” unit occupies the ground and second floor of residential development. A typical 65’ wide, double-loaded layout could occur above this concept. The ground floor units are narrow and full width while their corresponding second floors are staggered and offset on opposing sides of a corridor. A flexible space is grouped with bedrooms on the second floor.

