

# NEW CONSTRUCTION DECISION TREE

UPDATED SEPTEMBER 2025

Use this tool to quickly identify key decisions, map out options, and communicate clearly the chosen pathways that demonstrate Massachusetts energy code compliance.

## HOW TO USE:

1. **START** with the main decision tree, existing or new construction

2. Consider **ONE USE** at a time, answering questions to

- **IDENTIFY** the code "branch"
- Navigate through the appropriate **CODE BRANCH** by establishing the path that represent your project

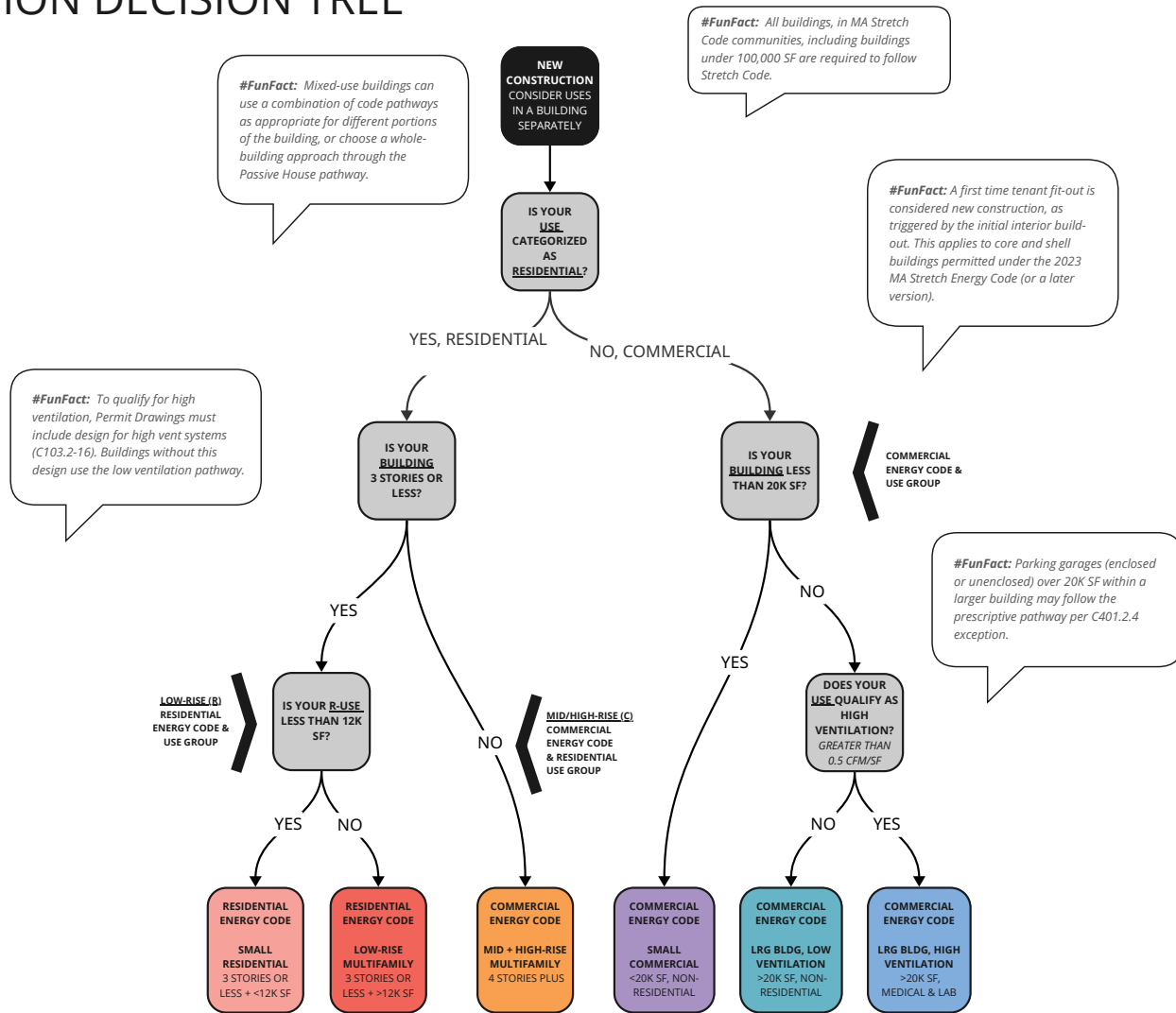
3. For **MIXED-USE BUILDINGS**, repeat the process for each use group

The branches do not contain all energy code requirements. Instead, it notes options or decisions which send you down a path. The path points to the relevant code section(s), detailing project requirements.

## BE MINDFUL:

The International Energy Conservation Code (IECC) is a model energy code, which forms the basis for the Massachusetts energy codes. The first bucket, the **Base Energy Code**, is the minimum required energy code in Massachusetts. The second bucket, the **Stretch Code**, is a **stricter option** towns and cities have already voted to incorporate. The third bucket, the **Specialized Opt-in Code**, includes **additional requirements** in addition to the Base and Stretch Code and is available for municipal vote as of December 2022.

This effort to map out MA Energy Code compliance pathways does not account for impacts of other codes and ordinances that may apply to projects.



# LOW-RISE RESIDENTIAL BRANCH: 3 STORIES OR LESS <12,000 SF

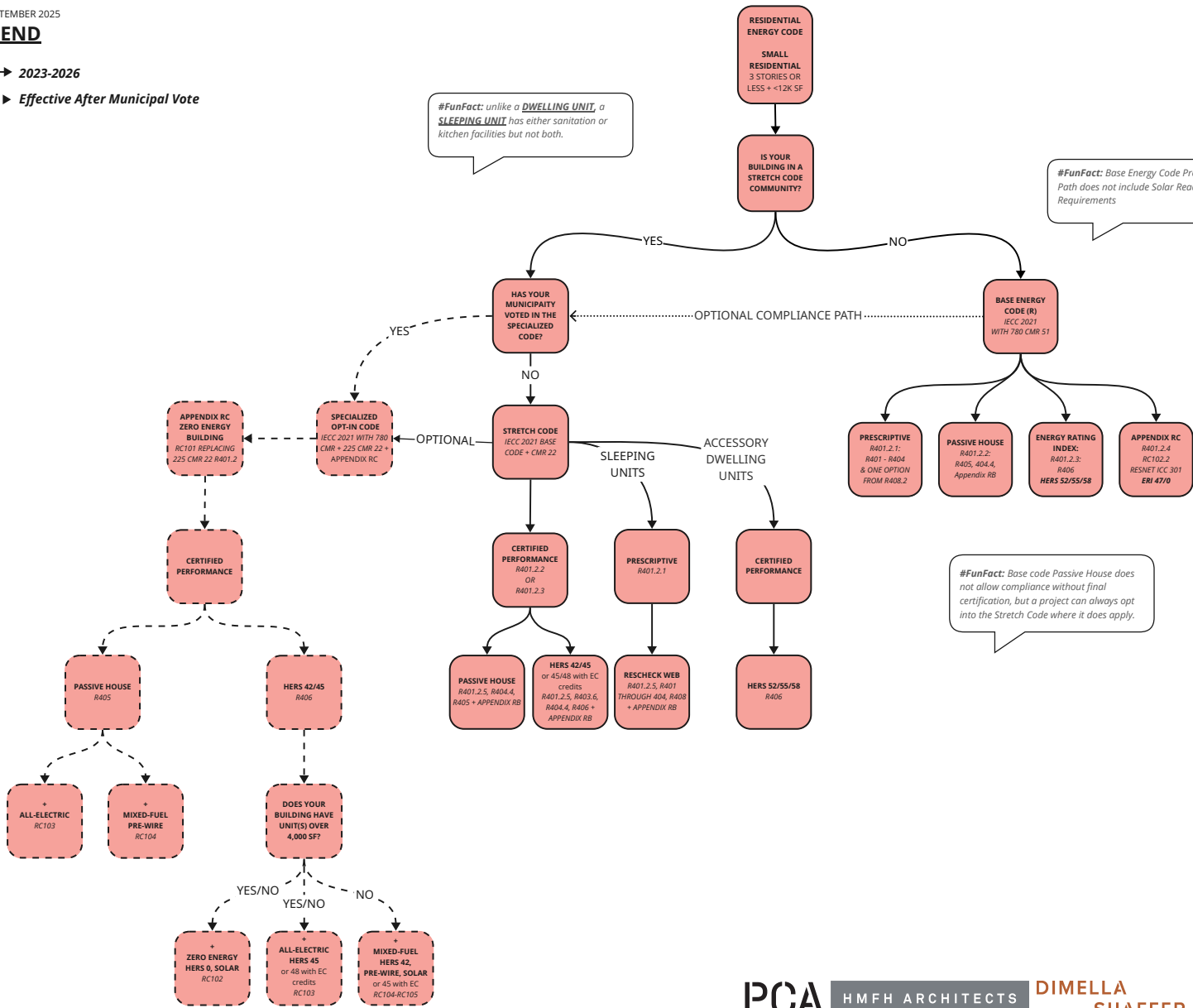
UPDATED SEPTEMBER 2025

## LEGEND

- 2023-2026
- - - Effective After Municipal Vote

#FunFact: unlike a **DWELLING UNIT**, a **SLEEPING UNIT** has either sanitation or kitchen facilities but not both.

#FunFact: Base Energy Code Prescriptive Path does not include Solar Ready Requirements



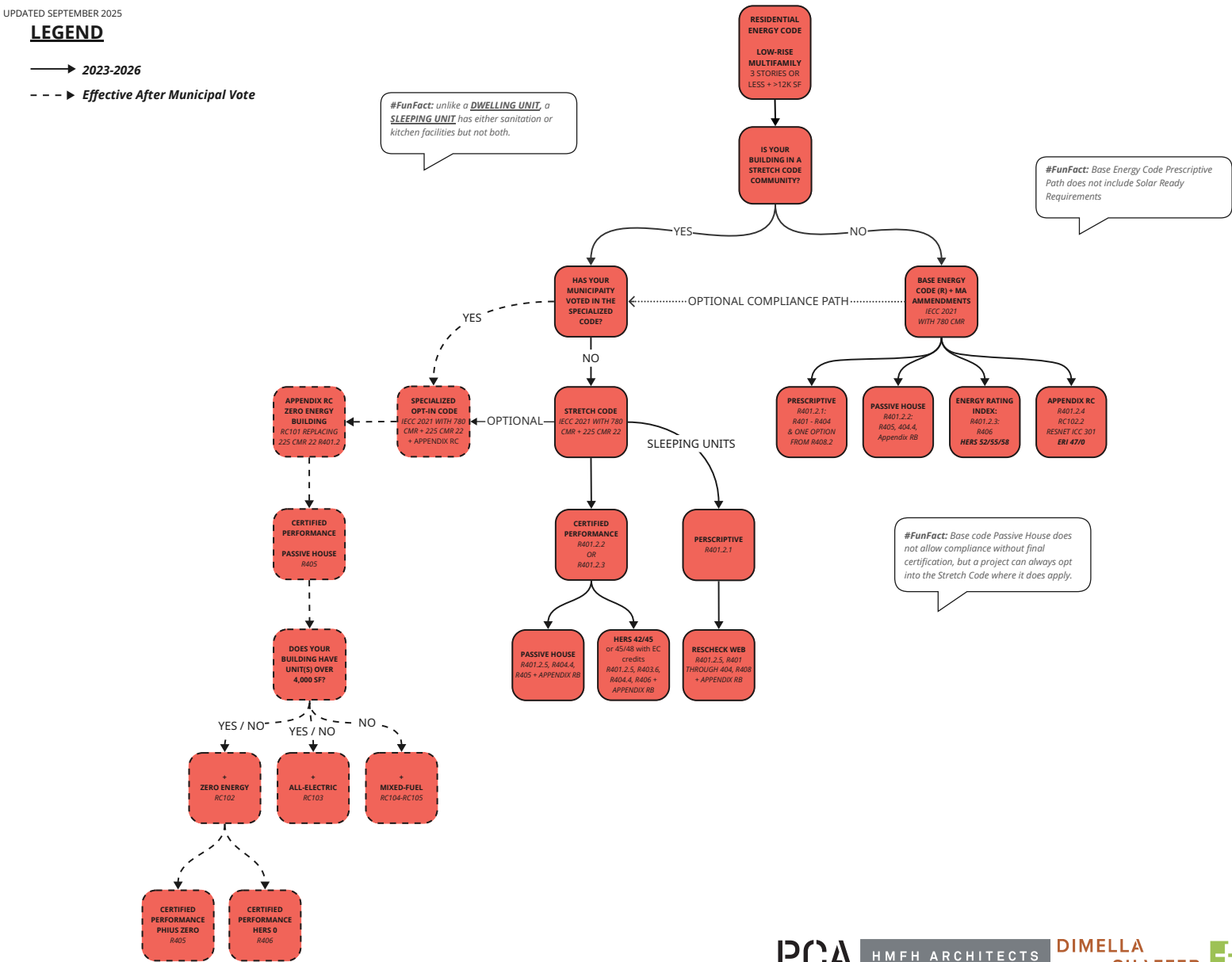
#FunFact: Base code Passive House does not allow compliance without final certification, but a project can always opt into the Stretch Code where it does apply.

# LOW-RISE RESIDENTIAL BRANCH: 3 STORIES OR LESS >12,000 SF

UPDATED SEPTEMBER 2025

## LEGEND

- 2023-2026
- - - Effective After Municipal Vote



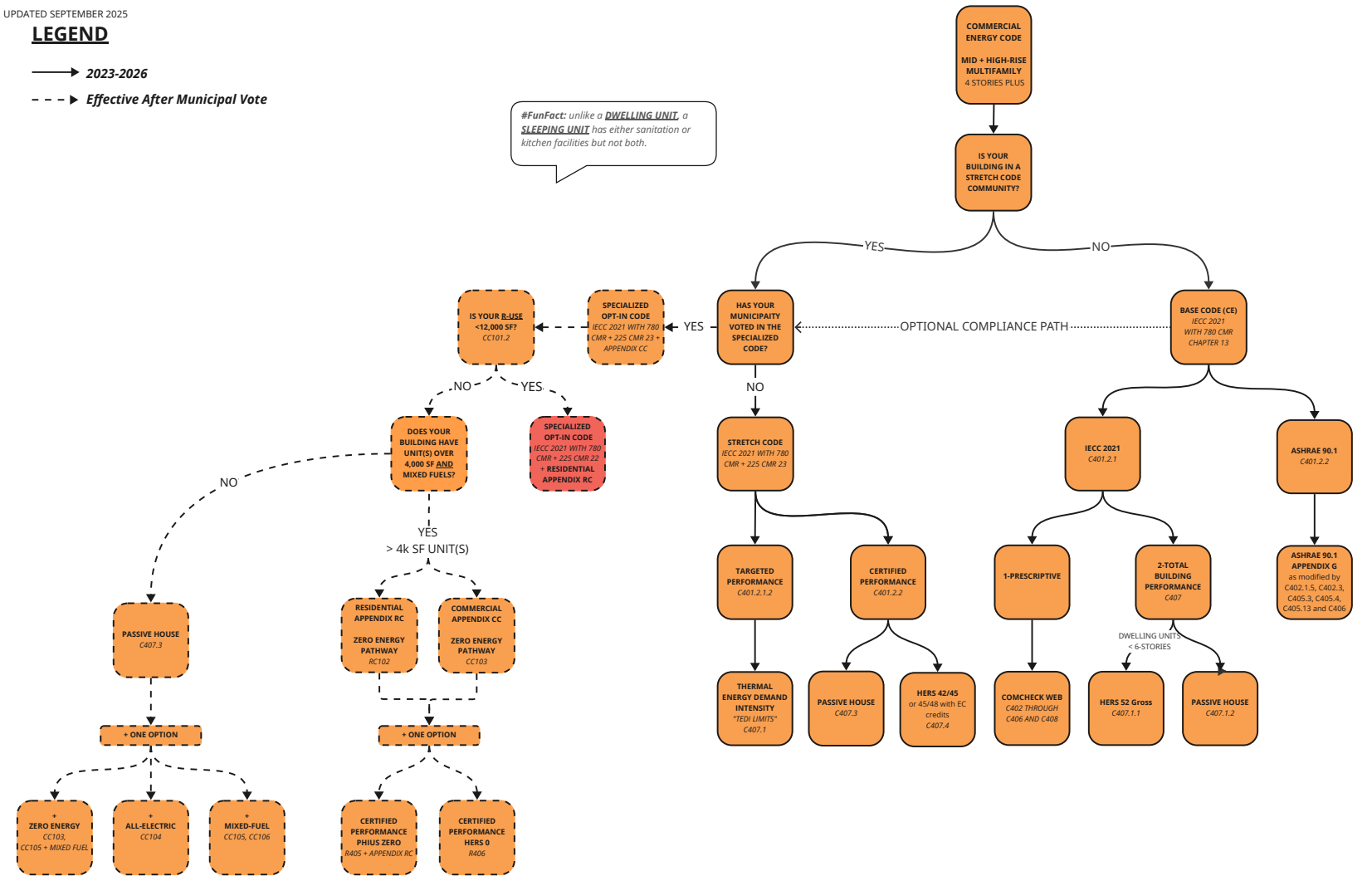
# COMMERCIAL BRANCH: RESIDENTIAL 4 STORIES OR MORE

UPDATED SEPTEMBER 2025

## LEGEND

- 2023-2026
- - - Effective After Municipal Vote

#FunFact: unlike a **DWELLING UNIT**, a **SLEEPING UNIT** has either sanitation or kitchen facilities but not both.



# COMMERCIAL BRANCH: <20,000 SF

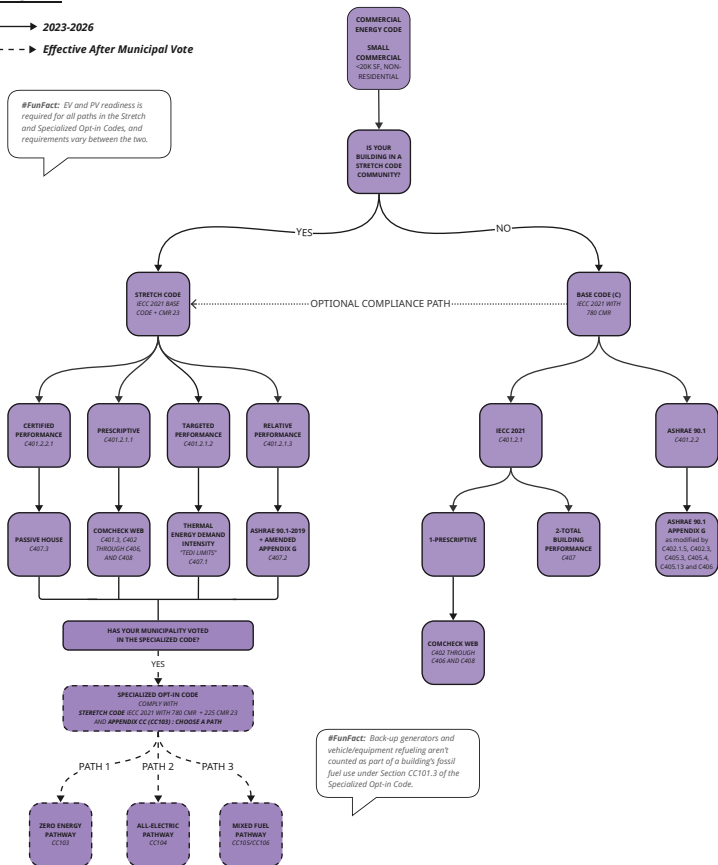
UPDATED SEPTEMBER 2025

## LEGEND

→ 2023-2026

- - - - - Effective After Municipal Vote

#FunFact: EV and PV readiness is required for all paths in the Stretch and Specialized Opt-in Codes, and requirements vary between the two.



# COMMERCIAL BRANCH: LOW-VENTILATION >20,000 SF

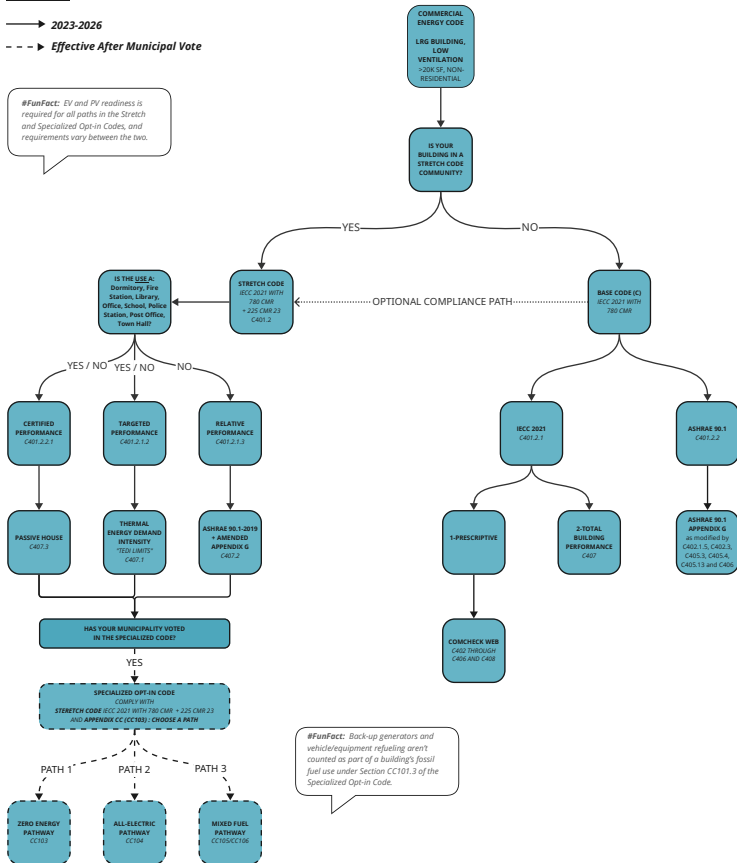
UPDATED SEPTEMBER 2025

## LEGEND

→ 2023-2026

---> Effective After Municipal Vote

**#FunFact:** EV and PV readiness is required for all paths in the Stretch and Specialized Opt-in Codes, and requirements vary between the two.



# COMMERCIAL BRANCH: HIGH-VENTILATION >20,000 SF

UPDATED SEPTEMBER 2025

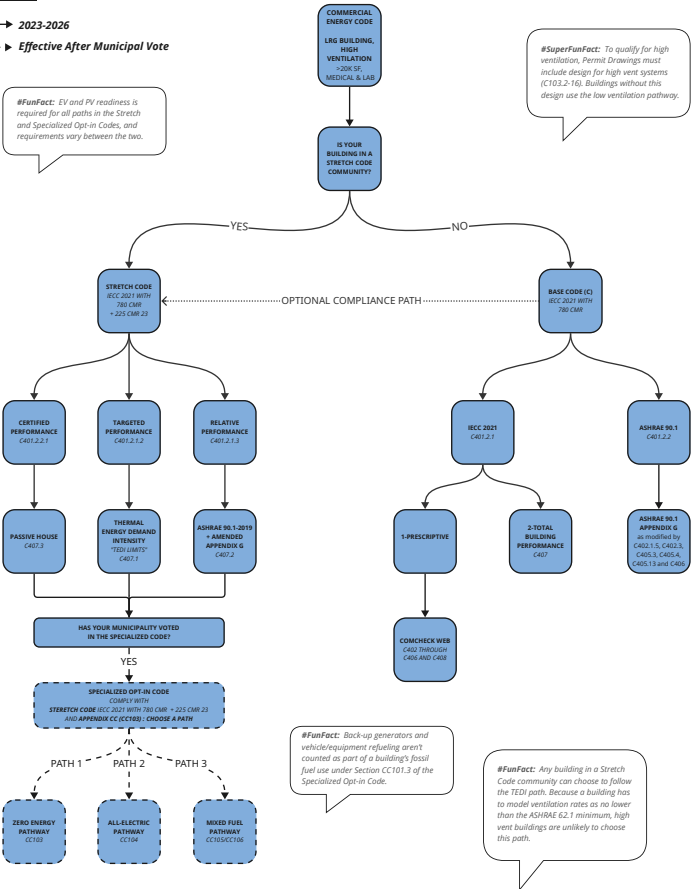
## LEGEND

→ 2023-2026

---> Effective After Municipal Vote

**#FunFact:** EV and PV readiness is required for all paths in the Stretch and Specialized Opt-in Codes, and requirements vary between the two.

**#SuperFunFact:** To qualify for high ventilation, Permit Drawings must include design for high vent systems (C103.2-16). Buildings without this design use the low ventilation pathway.



**#FunFact:** Back-up generators and vehicle/equipment refueling aren't counted as part of a building's fossil fuel use under Section CC101.3 of the Specialized Opt-in Code.

**#FunFact:** Any building in a Stretch Code community can choose to follow the TEDI path. Because a building has to model ventilation rates as low as the ASHRAE 62.1 minimum, high vent buildings are unlikely to choose this path.